

**Byooviz**<sup>™</sup> ▼  
Ranibizumab

**Important safety information for patients treated with BYOOVIZ<sup>™</sup> (ranibizumab) with visual impairment due to retinal vein occlusion (RVO)**

- ▼ This medicine is subject to additional monitoring. This will allow quick identification of new safety information. You can help by reporting any side effects you may get. Suspected adverse reactions should be reported to the MHRA via Yellow Card Scheme at [www.mhra.gov.uk/yellowcard](http://www.mhra.gov.uk/yellowcard).

This booklet was created to help you better understand Byooviz™ when used for the treatment of the following condition:

**Retinal vein occlusion (RVO)**

## **SUMMARY OF IMPORTANT SAFETY INFORMATION**

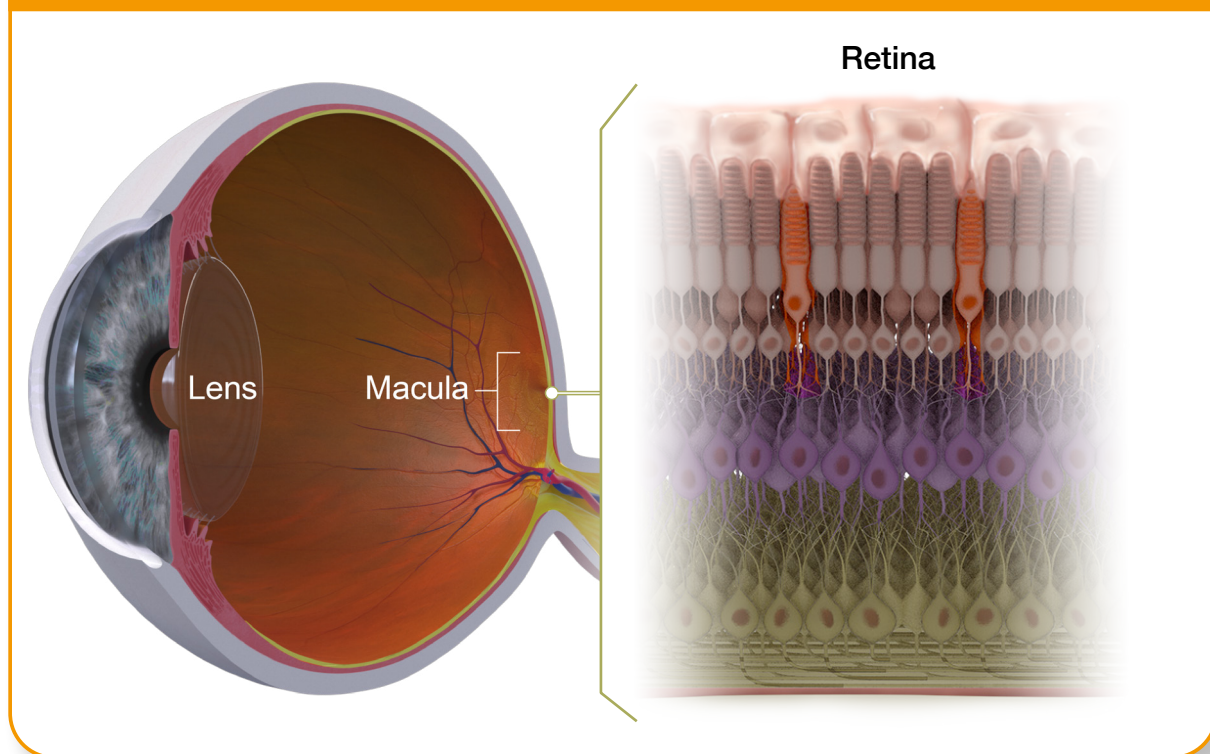
Contact your doctor as soon as possible if you experience any of the following symptoms after treatment with Byooviz™:

- Pain
- Light sensitivity/tearing
- Swollen lids or other swelling
- Light flashes
- Seeing flies, black spots or coloured halos
- Drying of the surface of your eye
- Increasing redness
- Blurred, distorted or sudden loss of vision

## WHAT IS BYOOVIZ™?

- In diseases such as RVO, abnormal blood vessels grow in the eye, which can leak and cause vision loss
- Byooviz™ specifically recognizes and blocks the action of new blood vessel growth in the eye, and so in turn can help to stop leakage and vision loss

### HEALTHY EYE AND HEALTHY RETINA

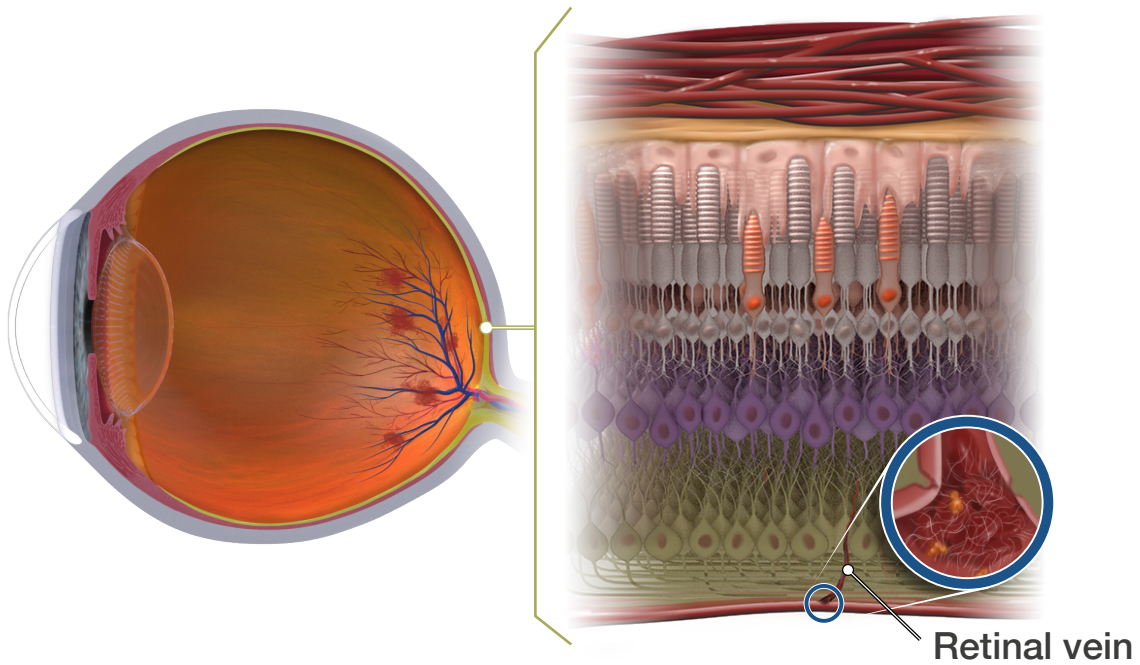


# WHY HAVE I BEEN PRESCRIBED BYOOVIZ™?

## RVO

- RVO is a condition that affects the macula, a part of the retina at the back of the eye
- The macula is the area that lets you see sharply in the centre of your vision
- Blockage of a retinal vein can cause leakage of fluid into the retina and swelling of the macula. This may damage the retina and cause vision loss
- There are two types of RVO, central and branch, which are defined by the type of blood vessel that is affected:
  - ▶ Branch RVO is more common than central RVO and is caused by obstruction of a tributary of the retinal vein. Only the part of the retina that is drained by the blocked branch is affected
  - ▶ Central RVO is caused by obstruction of the central retinal vein. Because the main vein in the eye is blocked, the entire retina is affected

## RETINA AFFECTED BY RVO



Blockage in a retinal vein increases blood vessel leakage, leading to accumulation of fluid

### HOW IS BYOOVIZ™ TREATMENT GIVEN?

- Byooviz™ is given by your ophthalmologist (eye doctor) as an injection into the eye
- It is normal to worry about such injections, but usually the injection is virtually painless

### WHAT WILL HAPPEN AT MY APPOINTMENT?

- On the day of your treatment, care will be taken to make sure you are relaxed and comfortable
- Before receiving Byooviz™, it is important to tell your doctor if:
  - ▶ You have had a stroke or experienced transient signs of stroke (weakness or paralysis of limbs or face, difficulty speaking or understanding)
  - ▶ You are taking or have recently taken any other medicines, including medicines obtained without prescription
  - ▶ You have an eye infection
  - ▶ You have any pain or redness in your eye
  - ▶ You think you may be allergic to Byooviz™ or to Betadine® (iodine)

- Keeping your doctor informed will help them to decide whether Byooviz™ is the most appropriate treatment for you
- A doctor or nurse will:
  - ▶ Cover your face and the area around the eye with a special drape
  - ▶ Clean your eye and the skin around it
  - ▶ Hold your eye open so you don't blink
  - ▶ Numb your eye with an anaesthetic to prevent pain
- The doctor will then give the injection into the white part of your eye. You may feel a little pressure with the injection

### AFTER TREATMENT

#### WHAT WILL HAPPEN AFTER I RECEIVE MY BYOOVIZ™ INJECTION?

- Your doctor will perform eye tests, such as measuring the pressure in your eye, to make sure the treatment went well
- The white area of the eye, where the injection is given, will likely be red. This redness is normal and it will go away in a few days
- You may see a few spots or ‘floaters’ in your vision. These spots are normal and should go away in a few days
- Contact your doctor if either of these symptoms do not go away or get worse
- Your pupils will be dilated for the injection, and this can make it difficult for you to see for a few hours after the treatment. You should not drive until your vision has returned to normal
- It is important to monitor any changes in the condition of your eye and your overall well-being in the week following your injection
- Rarely, injections in the eye can cause infection



## **CONTACT YOUR DOCTOR**

**AS SOON AS POSSIBLE IF YOU HAVE ANY OF THE FOLLOWING SIGNS AND SYMPTOMS IN YOUR EYE:**

- ▶ Pain
- ▶ Light sensitivity/tearing
- ▶ Swollen lids or other swelling
- ▶ Increasing redness
- ▶ Blurred, distorted or sudden loss of vision
- ▶ Light flashes
- ▶ Seeing flies, black spots or coloured halos
- ▶ Drying of the surface of your eye


If you get any side effects, talk to your doctor or pharmacist. This includes any possible side effects not listed in this leaflet. You can also report side effects directly via the Yellow Card Scheme at:

[www.mhra.gov.uk/yellowcard](http://www.mhra.gov.uk/yellowcard) or search for MHRA Yellow Card in the Google Play or Apple App Store.

By reporting side effects you can help provide more information on the safety of this medicine.

## HOW LONG WILL I NEED TO CONTINUE BYOOVIZ™ TREATMENT?

- Every patient is different. It is likely that you will need additional Byooviz™ injections, but this will depend on how you respond to treatment and how your vision changes
- If you are considering stopping treatment with Byooviz™, ask your doctor for advice first
- For any further questions on the use of this product, please ask your doctor
- Follow all your doctor's advice carefully. They may differ from the general information in this leaflet



Your doctor will decide how often they wish to see you to monitor your condition and determine if you need additional injections

Always go to every appointment that your doctor arranges for you

If you miss an appointment for Byooviz™ treatment, contact your doctor as soon as possible

Keep this booklet; you may need to read it again

If you have any further questions, ask your doctor or pharmacist

If you experience any signs or symptoms that you consider to be associated with the use of Byooviz™, but are not listed in this booklet, please tell your doctor

**This booklet is provided for your education and complements the Patient Information Leaflet**